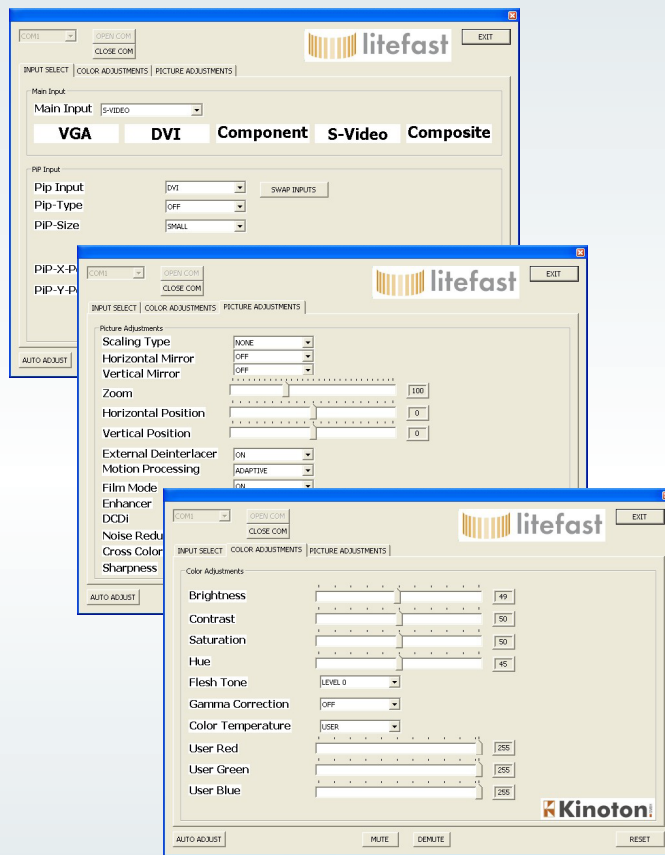


The Litefast Image Scaler enhances Kinton Litefast MAGIC and MOTION displays by additional signal input capabilities. It allows for connecting virtually any kind of content source to the Litefast 360° displays. Supporting common content sources like standard DVD players, TV and PC, it guarantees amazing high-definition images on your Litefast display. In operation there is no demand for any user interaction due to automatic input detection. The gateway will automatically care about resolutions and frame-rate conversion. A user-friendly on-screen display facilitates setup and configuration.



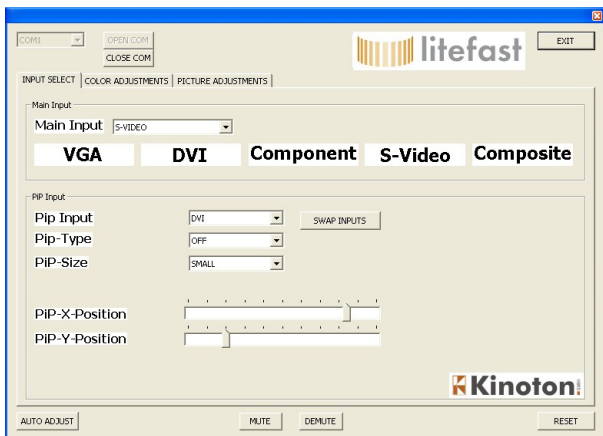
Litefast Image Scaler

- add-on for Kinton Litefast 360° LED Video Displays
- providing advanced input capabilities
- allows working with different input resolutions and frame-rates
- support for most common consumer and semi-professional signal sources
- Pip – Picture-In-Picture support for displaying two sources at the same time
- powerful high-quality upscaling and downscaling
- zoom function for perfect format adjustment
- de-interlacing for non-progressive sources
- setup and configuration via OSD (On-Screen-Display)

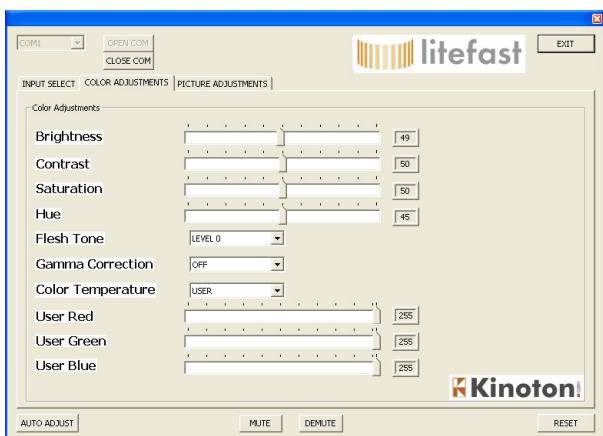


Specifications:

- Input:** Composite, S-Video, DVI-D and VGA
- Output:** DVI-D, resolution and frame-rate optimized for Kinoton Litefast displays
- Functions:**
- zoom and shrink scaling
(all resolutions from VGA to WUXGA) frame rate conversion
 - programmable gamma correction (CLUT)
 - RealColor™ technology provides flesh tone adjustment
- Dimensions:** 120 mm (l) x 120 mm (w) x 60 mm (h)
- Power consumption:** 250 W



Definition of input and PIP parameters



Color adjustment

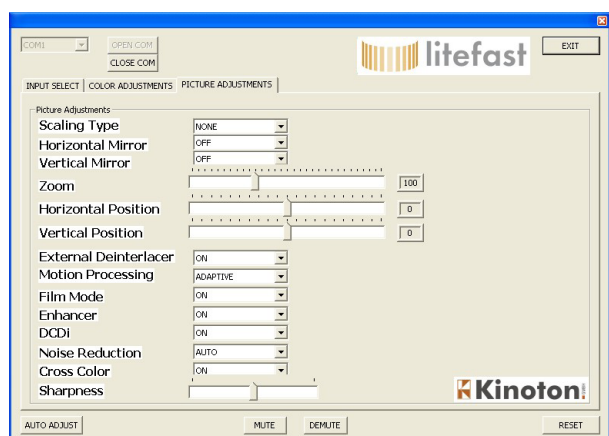


Image scaling