

Litefast Media Player

The Litefast Media Player is a universal hardware and software bundle optimised for Kinoton Litefast Motion and Litefast Magic Displays.

The system can handle multiple video file formats as well as still frame formats including background sound. Due to its flexible design, this Media Player is suitable for other POI / POS and presentation applications as well.



Top Features

- » Allows stand-alone operation
- » Including a software package for external control, playlist creation and content upload
- » Very intuitive and easy-to-use graphical user interface
- » Advanced Media Analyzer for import and verification of new content
- » Resolution-independent
- » High-grade output scaling for best possible image quality on display
- » Advanced scheduling
- » User management with different levels to control user access
- » Optional control via external show controller
- » Content upload via Ethernet or WLAN to a selected Litefast 360° Display
- » Supports open XLM playlist format
- » Capable of multi-format playback
- » Still frame formats: JPEG/JPEG 2000, PNG, GIF, BMP, TIFF, TGA, PBM/PGM/PPM, XBM/XPM
- » Video formats: MPEG, AVI, WMV
- » Audio formats: WAV, MP3
- » Optimized for Kinoton Litefast 360° Displays
- » Suitable for other POS / POI applications as well

Hardware and Software: The Litefast Media Player Components

The player unit itself can be integrated into the Litefast Motion or Litefast Magic Display.

It runs a powerful software providing multi-format playback, advanced scheduling and stand-alone operation.

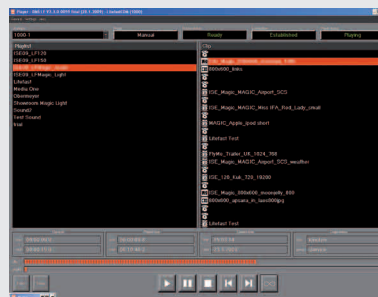
Of course the Litefast 360° Displays can also be comfortably programmed by remote client application.

You only have to install the Editor software module and the COM network tool coming with the Media Player on an external PC or laptop. Now you can easily create new play lists and upload them via Ethernet or WLAN (option) to any selected Litefast Motion or Litefast Magic Display in your network.

The Litefast Media Players Software Modules

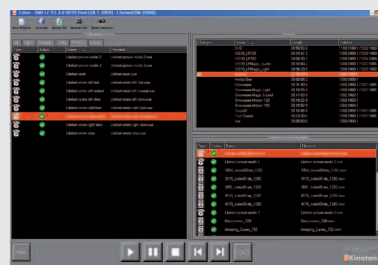
Player Module

- » Multi-format playback
- » Advanced scheduling
- » Stand-alone operation
- » High-quality output scaling



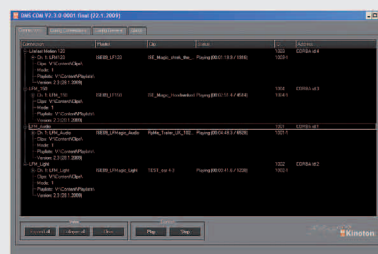
Editor Module

- » Media analyzer for content verification
- » Content management
- » Play list creation and editing
- » Preview function
- » Channel/display assignment



COM Network Tool

- » Central player status information
- » Network distribution of play lists and content
- » Advanced RS-232 and Ethernet control
- » Automatic update function
- » Interface to external advertising distribution networks (option)
- » Web interface for central status information



made by



Kinoton GmbH

Industriestrasse 20a
82110 Germering / Germany
Phone +49 (0)89 894446-0
Fax +49 (0)89 8402002
welcome@kinoton.de
www.litefast-display.com